

# CURVA DE FLANGE MÓVEL A 90°

## DOUBLE MOVABLE FLANGED 90° BEND

10.1000



PN 10 / 16 / 25

construção seg. according to	EN 545:2006
Flange	DIN EN 1092-2

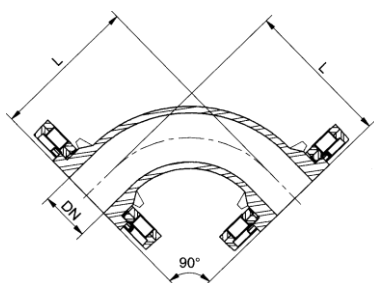
A partir de DN 700 inclusive as curvas são de flange fixa.

From DN 700 inclusively the bends are with fixed flanges.

componente	material	component	material	norma	standard
corpo e flanges	ferro fundido dúctil (EN-GJS-500)	body and flanges	ductile iron (EN-GJS-500)	DIN EN 1563	
revestimento anticorrosivo interior e exterior	tinta epóxica potável RESICOAT 9000 R4 BLUE aplicada electrostaticamente com espessura $\geq 250 \mu\text{m}$	coating inside and outside	epoxy paint potable RESICOAT 9000 R4 BLUE applied electrostatically with thickness $\geq 250 \mu\text{m}$	DIN 30677	

**Sob Consulta:**  
Outros diâmetros.

**On request:**  
Other diameters.



DN	Código - Code			L	Peso - Weight (Kg)		
	PN 10	PN 16	PN 25		PN 10	PN 16	PN 25
40	10001019	10001019	10006019	140	5.0	5.0	5.0
50	10001020	10001020	10006020	150	6.4	6.4	6.4
60	10001030	10001030	10001032	165	7.5	7.5	7.5
65	10001040	10001040	10006040	165	8.5	8.5	8.5
80	10001050	10001050	10006050	165	9.0	9.0	9.0
100	10001060	10001060	10001061	180	11.5	11.5	12.3
125	10001070	10001070	10006070	200	16.0	16.0	16.8
150	10001075	10001075	10006075	220	20.2	20.2	21.6
200	10001085	10001085	10006085	260	28.7	28.7	29.5
250	10001090	10001091	10006090	350	45.2	45.2	47.8
300	10001095	10001096	10006096	400	71.0	71.0	75.4
350	10001098	10001099	10006099	450	96.0	98.8	110.0
400	10001120	10001121	10006120	500	125.2	131.0	142.2
450	10001130	10001131	10006130	550	156.0	165.0	176.0
500	10001170	10001171	10006171	600	197.0	215.0	227.0
600	10001180	10001181	10006181	700	325.0	345.0	362.0
700	10112150	10112152	10112154	800	593.0	-	-
800	10112160	10112162	10112164	900	637.0	677.0	-
900	10112170	10112172	10112174	1000	-	-	-
1000	10112180	10112182	10112184	1100	-	-	-

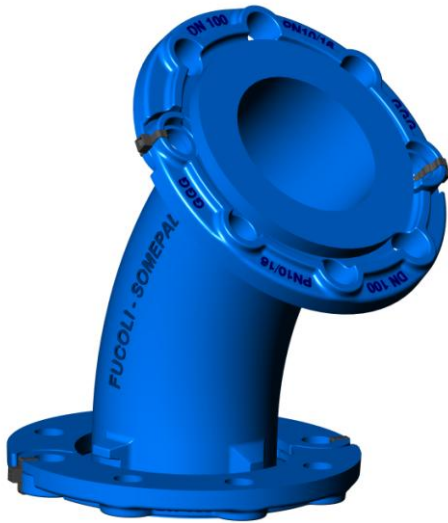


### Homologações - Homologation

#### Revestimento - Coating

- INETI (Portugal)
- KIWA (Holanda - Netherlands)
- WRAS (Reino Unido - United Kingdom)
- CARSO (França - France)
- HYGIENE Institut Ruhrgebiets (Alemanha - Germany)

Sendo um dos principais objectivos da nossa empresa o desenvolvimento e aperfeiçoamento dos nossos produtos, reservamo-nos no direito de fornecer quaisquer outros que possam diferir ligeiramente dos descritos e ilustrados nesta publicação.



## CURVA DE FLANGE MÓVEL A 45° DOUBLE MOVABLE FLANGED 45° BEND

10.1001

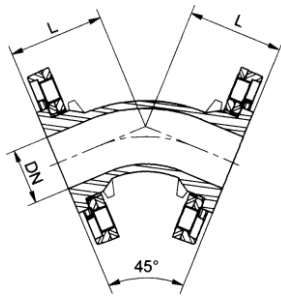
PN 10 / 16 / 25

construção seg. according to	EN 545:2006
Flange	DIN EN 1092-2

A partir de DN 700 inclusive as curvas são de flange fixa.

From DN 700 inclusively the bends are with fixed flanges.

componente	material	component	material	norma	standard
corpo e flanges	ferro fundido dúctil (EN-GJS-500)	body and flanges	ductile iron (EN-GJS-500)	DIN EN 1563	
revestimento anticorrosivo interior e exterior	tinta epóxica potável RESICOAT 9000 R4 BLUE aplicada electrostaticamente com espessura $\geq 250 \mu\text{m}$	coating inside and outside	epoxy paint potable RESICOAT 9000 R4 BLUE applied electrostatically with thickness $\geq 250 \mu\text{m}$	DIN 30677	
Sob Consulta: Outros diâmetros.		On request: Other diameters.			



DN	Código - Code			L	Peso - Weight (Kg)		
	PN 10	PN 16	PN 25		PN 10	PN 16	PN 25
40	10003010	10003010	10003312	78.0	4.5	4.5	4.5
50	10003020	10003020	10003322	85.5	5.6	5.6	5.6
60	10003030	10003030	10003332	92.0	6.6	6.6	6.6
65	10003040	10003040	10003342	92.0	7.2	7.2	7.2
80	10003050	10003050	10003052	130.0	8.7	8.7	8.7
100	10003060	10003060	10003362	140.0	11.0	11.0	11.8
125	10003070	10003070	10008070	150.0	14.4	14.4	15.2
150	10003080	10003080	10003382	160.0	18.4	18.4	19.2
200	10003090	10003090	10003392	180.0	25.6	25.6	27.0
250	10003100	10003101	10008100	245.0	42.0	42.0	44.6
300	10003110	10003111	10003412	275.0	62.3	62.3	66.7
350	10003112	10003113	10003422	300.0	83.0	85.3	97.0
400	10003120	10003121	10003432	325.0	105.6	111.4	122.6
450	10003130	10003131	10003435	350.0	130.0	139.0	150.0
500	10003140	10003141	10003442	375.0	159.3	176.7	190.0
600	10003150	10003151	10003452	426.0	230.0	250.0	266.0
700	10115150	10115152	10115154	478.0	515.0	-	-
800	10115160	10115162	10115164	529.0	412.0	452.0	-
900	10115170	10115172	10115174	581.0	-	-	-
1000	10115180	10115182	10115184	632.0	-	-	-



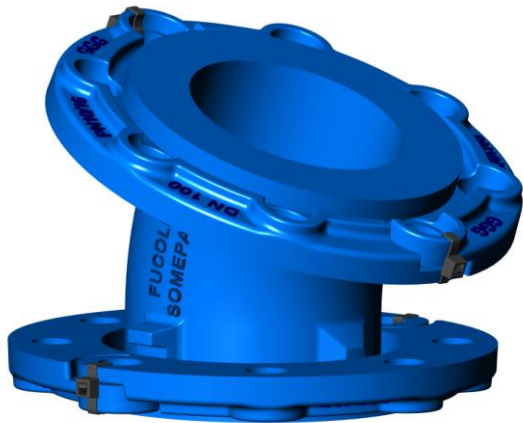
### Homologações - Homologation

#### Revestimento - Coating

- INETI (Portugal)
- KIWA (Holanda - Netherlands)
- WRAS (Reino Unido - United Kingdom)
- CARSO (França - France)
- HYGIENE Institut Ruhrgebiets (Alemanha - Germany)

Sendo um dos principais objectivos da nossa empresa o desenvolvimento e aperfeiçoamento dos nossos produtos, reservamo-nos no direito de fornecer quaisquer outros que possam diferir ligeiramente dos descritos e ilustrados nesta publicação.

Being one of our aims a constant development of our products, the characteristics of described material may be altered without prior warning.



# CURVA DE FLANGE MÓVEL A 22° 30' 10.1002

## DOUBLE MOVABLE FLANGED 22° 30' BEND

PN 10 / 16 / 25

Flange	DIN EN 1092-2
--------	---------------

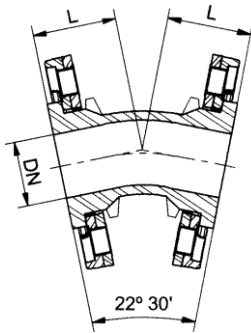
A partir de DN 700 inclusive as curvas são de flange fixa.

From DN 700 inclusively the bends are with fixed flanges.

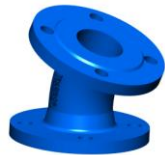
componente	material	component	material	norma	standard
corpo e flanges	ferro fundido dúctil (EN-GJS-500)	body and flanges	ductile iron (EN-GJS-500)	DIN EN 1563	
revestimento anticorrosivo interior e exterior	tinta epóxica potável RESICOAT 9000 R4 BLUE aplicada electrostaticamente com espessura $\geq 250 \mu\text{m}$	coating inside and outside	epoxy paint potable RESICOAT 9000 R4 BLUE applied electrostatically with thickness $\geq 250 \mu\text{m}$	DIN 30677	

**Sob Consulta:**  
Outros diâmetros.

**On request:**  
Other diameters.



DN	Código - Code			L	Peso - Weight (Kg)		
	PN 10	PN 16	PN 25		PN 10	PN 16	PN 25
40	10002010	10002010	10002012	65	4.0	4.0	4.0
50	10002020	10002020	10002022	65	5.3	5.3	5.3
60	10002030	10002030	10002032	65	5.9	5.9	5.9
65	10002040	10002040	10002042	65	6.5	6.5	6.5
80	10002050	10002050	10002052	65	7.2	7.2	7.2
100	10002060	10002060	10002062	68	9.0	9.0	9.8
125	10002070	10002070	10002072	75	11.9	11.9	12.7
150	10002080	10002080	10002082	80	14.3	14.3	15.1
200	10002090	10002090	10002092	87	19.4	19.4	20.8
250	10002100	10002101	10002102	110	31.7	31.7	34.3
300	10002110	10002111	10002115	123	44.7	44.7	49.1
350	10002112	10002113	10002117	140	58.0	60.8	72.0
400	10002120	10002121	10002125	150	73.2	79.0	90.2
450	10002130	10002131	10002435	170	90.0	99.0	110.0
500	10002150	10002151	10002152	180	110.0	127.4	140.0
600	10002180	10002181	10002182	205	154.0	174.0	188.0
700	10118150	10118152	10118154	245	-	-	-
800	10118160	10118162	10118164	275	322.0	362.0	-
900	10118170	10118172	10118174	300	-	-	-
1000	10118180	10118182	10118184	327	-	-	-



### Homologações - Homologation

**Revestimento** - Coating

- INETI (Portugal)
- KIWA (Holanda - Netherlands)
- WRAS (Reino Unido - United Kingdom)
- CARSO (França - France)
- HYGIENE Institut Ruhrgebiets (Alemanha - Germany)

Sendo um dos principais objectivos da nossa empresa o desenvolvimento e aperfeiçoamento dos nossos produtos, reservamo-nos no direito de fornecer quaisquer outros que possam diferir ligeiramente dos descritos e ilustrados nesta publicação.

Being one of our aims a constant development of our products, the characteristics of described material may be altered without prior warning.

# DOUBLE FLANGED 11° 15' BEND

10.1003

## Flanged fittings

**DN 50 - 1000 PN10/16/25**



### Product description

- Double flanged 11° 15' bend for drinking water and neutral liquids

### Standards

- Designed according to EN 545
- Flange drilling to EN 1092-2 PN10/16/25

### Corrosion protection

- Epoxy powder coating RAL 5005
- Applied internal and external with a minimum coating thickness of 250 µm
- Potable water approved epoxy coating, fusion bonded according EN 14901-1 and GSK approved

### Approvals

- ACS Potability Certificate 24 ACC NY 060
- GSK Certificate GSK-ID:1247 (RAL-GZ 662)

### Features

- Fitting approved for drinking water
- Body and flange in ductile cast iron EN-GJS-500-7
- Fast and easy to install
- Accessory with movable flanges up to DN 600 (inclusive) and fixed flanges from DN 700.



**Fucoli-Somepal**  
FUNDAÇÃO DE FERRO, S. A.

Visit our website at [www.fucoli-somepal.pt](http://www.fucoli-somepal.pt)

**Head office:** Estrada de Coselhas, 3000-125 Coimbra – Portugal | Tel.: (+351) 239 490100 | Fax: (+351) 239 490198

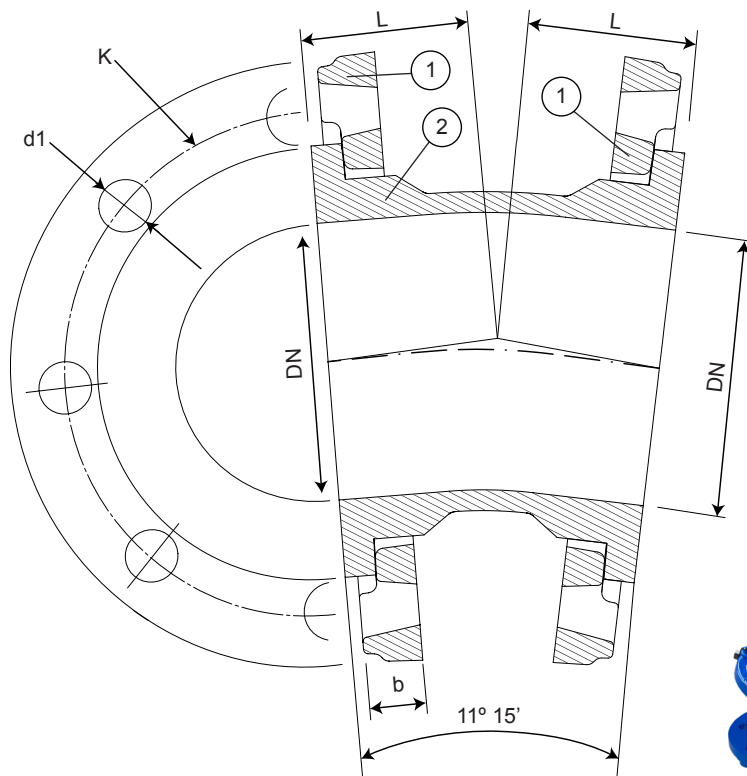
**Branch office:** Rua de Aveiro 50, 3050-420 Pampilhosa – Portugal | Tel.: (+351) 239 490100 | Fax: (+351) 231 949292 | [comercial@fucoli-somepal.pt](mailto:comercial@fucoli-somepal.pt)

# DOUBLE FLANGED 11° 15' BEND

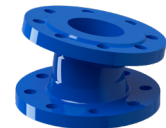
Flanged fittings

DN 50 - 1000 PN10/16/25

10.1003



DN 40 to DN 600



DN 700 to DN 1000

## Component list

pos.	components	material	standard
1	Flange	Ductile iron EN-GJS-500-7	EN 1563
2	Body	Ductile iron EN-GJS-500-7	EN 1563

## Reference and dimensions

DN	PN	code	L mm	K mm	n° x d1 mm	b mm	Flange movable / fixed	Kg approx.
50	10/16	10004020	57	125	4 x 19	21	movable	6
50	25	10004022	57	125	4 x 19	21	movable	6
60	10/16	10004030	57	135	4 x 19	21	movable	6
60	25	10004032	57	135	8 x 19	21	movable	6
65	10/16	10004040	57	145	4 x 19	21	movable	6
65	25	10004042	57	145	8 x 19	21	movable	6
80	10/16	10004050	57	160	8 x 19	21	movable	7
80	25	10004052	57	160	8 x 19	21	movable	8
100	10/16	10004060	60	180	8 x 19	21	movable	9
100	25	10004062	60	190	8 x 23	21	movable	10
125	10/16	10004070	63	210	8 x 19	21	movable	11
125	25	10004072	63	220	8 x 28	21	movable	12
150	10/16	10004080	68	240	8 x 23	21	movable	14
150	25	10004082	68	250	8 x 28	21	movable	15
200	10/16	10004090	71	295	8 - 12 x 23	22	movable	18
200	25	10004092	71	310	12 x 28	22	movable	20
250	10	10004100	84	350	12 x 23	26	movable	29
250	16	10004101	84	355	12 x 28	26	movable	29
250	25	10004103	84	370	12 x 31	26	movable	31
300	10	10004110	95	400	12 x 23	32	movable	41
300	16	10004111	95	410	12 x 28	32	movable	41

continued on next page

All the drawing, technical data, dimensions and weights are not binding. Subject to change. The components may be replaced by equivalent or higher materials without prior notice.

Ed.8 Rev.5 2/3

# DOUBLE FLANGED 11° 15' BEND

Flanged fittings

DN 50 - 1000 PN10/16/25

10.1003



continued from previous page

DN	PN	code	L mm	K mm	n° x d1 mm	b mm	Flange movable / fixed	Kg approx.
300	25	10004114	95	430	16 x 31	32	movable	45
350	10	10004112	110	460	16 x 23	36	movable	53
350	16	10004113	110	470	16 x 28	36	movable	58
350	25	10004118	110	490	16 x 34	36	movable	67
400	10	10004120	120	515	16 x 28	38	movable	68
400	16	10004121	120	525	16 x 31	38	movable	74
400	25	10004123	120	550	16 x 37	38	movable	85
450	10	10004130	125	565	20 x 28	38	movable	80
450	16	10004131	125	585	20 x 31	38	movable	89
450	25	10004435	125	600	20 x 37	38	movable	100
500	10	10004150	130	620	20 x 28	40	movable	102
500	16	10004151	130	650	20 x 34	40	movable	120
500	25	10004153	130	660	20 x 37	40	movable	132
600	10	10004160	150	725	20 x 31	46	movable	134
600	16	10004161	150	770	20 x 37	46	movable	154
600	25	10004163	150	770	20 x 41	46	movable	166
700	10	10121150	175	840	24 x 31	32.5	fixed	228
700	16	10121152	175	840	24 x 37	39.5	fixed	-
700	25	10121154	175	875	24 x 44	46.5	fixed	-
800	10	10121160	190	950	24 x 34	35	fixed	262
800	16	10121162	190	950	24 x 41	43	fixed	302
800	25	10121164	190	990	24 x 50	51	fixed	-
900	10	10121170	213	1050	28 x 34	37.5	fixed	366
900	16	10121172	213	1050	28 x 41	46.5	fixed	-
900	25	10121174	213	1090	28 x 50	55.5	fixed	-
1000	10	10121180	230	1160	28 x 37	40	fixed	410
1000	16	10121182	230	1170	28 x 44	50	fixed	-
1000	25	10121184	230	1210	28 x 57	60	fixed	-



**Fucoli-Somepal**  
FUNDIÇÃO DE FERRO, S. A.

Visit our website at [www.fucoli-somepal.pt](http://www.fucoli-somepal.pt)

Head office: Estrada de Coselhas, 3000-125 Coimbra – Portugal | Tel.: (+351) 239 490100 | Fax: (+351) 239 490198

Branch office: Rua de Aveiro 50, 3050-420 Pampilhosa – Portugal | Tel.: (+351) 239 490100 | Fax: (+351) 231 949292 | [comercial@fucoli-somepal.pt](mailto:comercial@fucoli-somepal.pt)

