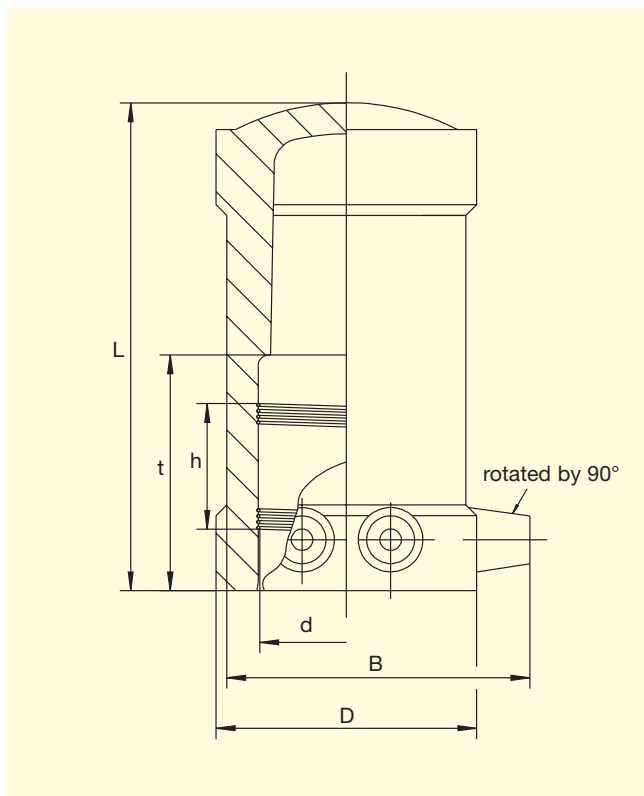


FRIALEN®-End Caps (Electrofusion) MV

PE 100 SDR 11

Maximum working pressure 16 bar (water) / 10 bar (gas)



d	Order Ref.	Stock-status	VE	PE	D	B	L	t	h	Weight kg/each
20	T-612 025	2	40	2.000	35	35.0	72	33.0	15.0	0.044
25	T-612 026	2	40	2.000	40	40.0	80	36.5	19.5	0.059
32 ^①	T-612 027	1	40	1.280	49	61.0	91	42.0	21.0	0.089
40 ^①	T-612 028	1	25	800	58	69.5	98	45.5	23.0	0.125
50	T-612 029	1	20	640	70	80.0	114	53.0	27.0	0.190
63	T-612 030	1	15	480	84	93.5	117	55.0	39.0	0.266
75	T-612 031	1	28	504	98	112,5	133	61.0	37.5	0.394
90	T-612 032	1	30	240	117	123.0	155	71.5	42.8	0.655
110	T-612 033	1	24	192	142	157.5	181	83.0	47.0	1.132
125	T-612 034	1	16	128	158	162.0	186	85.0	51.0	1.375
160	T-612 035	1	8	64	206	206.5	262	96.0	89.0	2.980
180	T-616 183	1	6	48	225	225	195	50.0	100.0	2.800
225	T-616 185	1	4	32	280	280	230	50.0	115.0	5.050

① also recommended as fused caps for the dome of FRIALEN®-Pressure Tapping Tees

FRIALEN®-Safety Fittings can be fused to pipes of SDR stages 11 to 17.6

DVGW-Registration Nos. DV-8601AU2248 and DV-8606AU2249

Please turn over for important information regarding application of **FRIALEN®-End Caps MV**.



FRIALEN[®]-End Caps (Electrofusion) MV

PE 100 SDR 11

Maximum working pressure 16 bar (water) / 10 bar (gas)

Areas of Application

The FRIALEN[®]-End Caps MV are used to close HDPE pipe ends.

Also recommended as fused caps for the dome of FRIALEN[®]-Pressure Tapping Tees.

Assembly Instructions

The fusion of a pipe end or the dome of a FRIALEN[®]-Pressure Tapping Tee with the FRIALEN[®]-End Cap MV takes place using FRIALEN[®]-fusing – leakproof and longitudinally strong.

The pipe end or the dome is prepared according to the general installation instructions (see “Assembly Instructions” for “FRIALEN[®]-Safety Fittings for house connections and distribution pipes up to d 225”). This involves removing the oxide skin and cleaning the pipe ends. A piece of pipe 20-60 cm long depending on the pipe diameter needs to be integrated behind the moulded fittings and valves, in order for the pipe to be continued later.

Eleven good reasons for using the FRIALEN[®]-End Caps MV

- Large coupler depth for ease of pipe guiding (no holding clamps required)
- Extra wide fusion zones
- Maximum stability through great wall thickness
- Cold zones at the front side and in the middle of the coupler
- Exposed heating coil for direct heat transmission to the pipe
- Small annular gap for build-up of optimum joining pressure in the fusion zone
- Contacts safe to touch
- Fusion indicator for visual fusion control
- Durable batch marking
- Individually wrapped for dirt protection
- Additional barcode for tracing back the underground fitting (Traceability-Coding).

Please find our datasheets for downloading on the internet at www.friatec.de

For further information, please call our FRIALEN[®] customer service staff and specialist advisers.